

PORTUGAL

Mail to foreign destinations with stamps of the "King Luís I - straight label" issue.

INTRODUCTION

During the reign of King Luís I of Portugal, which took place between November 11, 1861 and October 19, 1889, six issues of embossed stamps were issued. The aim of this exhibit is study the rates of correspondence sent to foreign countries during the circulation period of the last three issues called "Straight label": 1870/6, 1879/80 and 1884.

PLAN OF THE EXHIBIT

The study period was divided in two, taking into account the characteristics of the rates before and after the creation of the UPU. The first (1870-75), in which the rates are characterized by great diversity due, in part, to bilateral agreements for fixing the rates, before the Berna treaty in 1874 when the UPU was created, and the second large period (after 1875) that came in force in Portugal with the new standardised foreign postal rates to the UPU member countries.

Letters to destinations in various countries, some very unusual, of ordinary, registered, declared value and maritime mail are presented in chronological order and explained with primary emphasis on the rates, the period in force of these rates and the identification of stamps and marks.

BIBLIOGRAPHY

- Miranda da Mota, J., "Catálogo especializado Mundifil de Portugal, Açores e Madeira, 2020";
Oliveira Marques, AH, "História do Selo Português" (3 volumes), 2ª edição, 1995;
O. Vieira, Armando Mário, "Selos Clássicos de relevo em Portugal", 1983;
O. Vieira, Armando Mário, "Paquetes a Vapor para o Brasil (1851/1877)", 1991.

1st Period 1870-75 - Letter to France, 80 réis for 10 g, from 01/09/1866 to 31/12/1875.



From Lisbon to Louviers, franked with 5 réis, black and three stamps of 25 réis, carmine, all in unsurfaced paper and perforated $12 \frac{3}{4}$, obliterated with oval bar postmark "1" Lisbon and dated circular from origin 23/03/1871. In red P.D. (paid to destination).

PORTUGAL

Mail to foreign destinations with stamps of the "King Luís I - straight label" issue.

1st Period 1870-75 - Letter to USA, 160 réis for 7 1/2 g, from 01/01/1870 to 30/06/1875.



From Lisbon to New York, franked with 10 réis, yellow, 50 réis, green and 100 réis, lilac, (curved label), all in unsurfaced paper, perforated 12 3/4, die I, obliterated with oval bar postmark "1" Lisbon and dated circular from origin 11/09/1871. Mixed franking.

1st Period 1870-75 - Letter to Germany, 140 réis for 10 g, from 01/07/1867 to 31/03/1873.



From Lisbon to Berlin, franked with 20 réis, bistre and 120 réis, blue, (curved label) both in unsurfaced paper and perforated 12 3/4, obliterated with oval bar postmark "1" Lisbon and dated circular from origin 17/10/1871. In red P.D. (paid to destination). Mixed franking.

PORTUGAL

Mail to foreign destinations with stamps of the "King Luís I - straight label" issue.

1st Period 1870-75 - Letter to Germany, 280 réis for 20 g, from 01/07/1867 to 31/03/1873.



From Lisbon to Berlin, franked with two stamps 20 réis, bistre and 240 réis, lilac, (curved label) all in unsurfaced paper, perforated $12 \frac{3}{4}$, die I, obliterated with oval bar postmark "1" Lisbon and dated circular postmark from origin 27/10/1871. Mixed franking.

1st Period 1870-75 - Letter to Nederland, 140 réis for 10 g, from 01/07/1867 to 31/03/1873.



From Oporto to Amsterdam, franked with 20 réis, bistre and 120 réis, blue, both in unsurfaced paper, perforated $12 \frac{3}{4}$, die I, obliterated with oval bar postmark "46" Oporto and dated circular from origin 17/02/1872.

PORTUGAL

Mail to foreign destinations with stamps of the "King Luís I - straight label" issue.

1st Period 1870-75 - Letter to Germany, 140 réis for 10 g, from 01/07/1867 to 31/03/1873.



From Lisbon to Berlin, franked with two stamps 20 réis, bistre and 100 réis, lilac, both in unsurfaced paper, perforated $12 \frac{3}{4}$, obliterated with oval bar postmark "1" Lisbon and dated circular from origin 04/03/1872. In red P.D. (paid to destination).

1st Period 1870-75 - Letter to Argentina 300 réis for 20 g (2nd rate), from 01/09/1871 to 30/06/1877.



From Lisbon to Buenos Ayres, carried by British packet "NEVA" from the "Royal Mail steam packet Company", franked with a strip of three stamps 100 réis, lilac, unsurfaced paper, perforated $12 \frac{3}{4}$, die I, obliterated with oval bar postmark "1" Lisbon and dated circular from origin 12/05/1872. On the back arrived dated postmark 08/06/1872.

PORTUGAL

Mail to foreign destinations with stamps of the "King Luís I - straight label" issue.

1st Period 1870-75 - To England,
120 réis for 7 1/2 g, from
01/08/1866 to 31/12/1875.

From Lisbon to Plymouth, franked
with 5 réis, black, two stamps 10 réis,
yellow, 20 réis, bistre, 25 réis,
carmine and 50 réis, green all in un-
surfaced paper, perforated 12 3/4, die
I, obliterated with oval bar postmark
"1" Lisbon, dated circular from
origine 22/11/1872.
Oval from London in black "MORE TO
PAY" and in red framed "FRANQUIA
INSUFICIENTE"
The letter was double rate.



1st Period 1870-75 - Letter to
England, 120 réis for 7 1/2 g, from
01/08/1866 to 31/12/1875.

From Porto to London, franked
with a strip of four stamps 5
réis, black, die II and a strip of
four 25 réis, carmine, die II, all in
unsurfaced paper, perforated
12 3/4, obliterated with oval bar
postmark, "46" Porto. Framed
"FRANQUIA INSUFICIENTE", the
letter was double rate.
Circular postmark dated arrival
07/02/1873.

PORTUGAL

Mail to foreign destinations with stamps of the "King Luís I - straight label" issue.



1st Period 1870-75 - Letter to Brasil, 80 réis for 10 g, by non subsidised packets, from 01/10/1870 to 30/06/1876.

From Santo Thyrso to Rio de Janeiro, franked with 10 réis, yellow, 20 réis, bistre and 50 réis, green all in unsurfaced paper, perforated $12 \frac{3}{4}$, die I, obliterated with oval bar postmark, "70" Santo Thyrso. Nominal postmark from Santo Thyrso. Square transit postmark from Lisbon 08/11/1872 and circular postmark dated arrival 30/11/1872.

1st Period 1870-75 - Letter to Switzerland, 140 réis for 10 g, from 01/07/1867 to 31/03/1873.



From Lisbon to Fluntern, franked with two stamps 20 réis, bistre and two stamps 50 réis, green, all in unsurfaced paper, perforated $12 \frac{3}{4}$, die I, obliterated by a oval bar postmark "1" Lisbon, dated circular from origin 26/03/1873. In red P.D. (paid to destination).

PORTUGAL

Mail to foreign destinations with stamps of the "King Luís I - straight label" issue.

1st Period 1870-75 - 120 réis for 10 g by French packets to 31/12/1875.



From Lisbon to Saint Louis, franked with 120 réis, blue, unsurfaced paper, perforated $12 \frac{3}{4}$, die I, obliterated with oval bar postmark "1" Lisboa, dated circular from origin 28/04/1873. In red P.D. (paid to destination)

1st Period 1870-75 - Letter to Spain, 25 réis for 10 g, from 01/08/1867 to 30/06/1875.



From Lisbon to Mérida, franked with a strip of five stamps 5 réis, black, unsurfaced paper, perforated $12 \frac{3}{4}$, die VI, obliterated with oval bar postmark "1" Lisbon and dated circular from origin 12/08/1873.

PORTUGAL

Mail to foreign destinations with stamps of the "King Luís I - straight label" issue.

1st Period 1870-75 - Letter to USA via Hamburgo, 110 réis for 15 g, from 01/04/1872 to 01/07/1875.



From Lisbon to New York, franked with 10 réis, yellow, die II and 100 réis, lilac, die I, both in unsurfaced paper, perforated $12 \frac{3}{4}$, obliterated with oval bar postmark "1" Lisbon and dated circular postmark from origin 29/09/1873.

1st Period 1870-75 - Letter to Brasil, 150 réis for 10 g, by British packets from 01/09/1871 to 30/06/1877.



From Vila Nova de Gaya to Rio de Janeiro, franked with 5 réis, black, die V, 25 réis, carmine, die VII and 120 réis, blue, both in unsurfaced paper, perforated $12 \frac{3}{4}$, obliterated with oval bar postmark "75" Vila Nova de Gaya, dated circular from origin 20/10/1873. The recipient paid 300 réis upon receiving the letter.

PORTUGAL

Mail to foreign destinations with stamps of the "King Luís I - straight label" issue.

1st Period 1870-75 - Letter to Latvian, 95 réis for 15 g, from 01/07/1873 to 30/06/1875.



From Oporto to Riga, franked with 5 réis, black, 10 réis, yellow and 80 réis, orange, all in unsurfaced paper, perforated 12 ³/₄, die I, obliterated with oval bar postmark "46" Oporto and dated circular from origin 08/05/1874. In red P.D. (paid to destination).

1st Period 1870-75 - Letter to Italy, 360 réis for 30g, 3 rd rate, from 01/10/1871 to 31/12/1875.



From Lisbon to Gênes, franked with 120 réis, blue and 240 réis, lilac, both in unsurfaced paper, perforated 12 ³/₄, obliterated with oval bar postmark "1" Lisbon and dated oval from origin 18/05/1874. In red P.D. (paid to destination).

PORTUGAL

Mail to foreign destinations with stamps of the "King Luís I - straight label" issue.

1st Period 1870-75

Letter to France, 180 réis (80 réis for 10 g + 100 réis registration fee from 01/09/1866 to 31/12/1875).



From Lisbon to Bordeaux, franked with 80 réis, orange, perforated 14, and 100 réis, lilac perforated 12 ³/₄, both in unsurfaced paper, obliterated with oval bar postmark "1" Lisbon, and dated oval "REGISTADA" from origin 07/10/1874. Circular railway "PORTUGAL-St JEAN de LUZ". In red P.D. (paid to destination) and **CHARGÉ**.

1st Period 1870-75 - Letter to Austria, 60 réis for 15 g, from 01/10/1873 to 30/06/1875.



From Porto to Trieste, franked with 10 réis, yellow, 50 réis, green, both in unsurfaced paper, perforated 12 ³/₄, die I, obliterated with oval bar postmark "46" Oporto and dated circular from origin 03/05/1875. On the back dated oval arrived postmark 11/05/1875. In red P.D. (paid to destination).

PORTUGAL

Mail to foreign destinations with stamps of the "King Luís I - straight label" issue.

1st Period 1870-75 - Letter to Italy, 120 réis for 10 g, from 01/10/1871 to 31/12/1875.



From Tavira to Livorno, franked with 20 réis, bistre and two stamps of 50 réis, green, all in unsurfaced paper, perforated $12 \frac{3}{4}$, die I, obliterated with oval bar postmark "218" Tavira. In red P.D. (paid to destination). Nominative postmark "TAVIRA"

2nd Period (after 1875) - Letter to Argentina, 750 réis for 50 g, 5th rate, by British packets from 01/07/1876 to 30/06/1877.



From Coruna to Lisbon carried by hand and in Lisbon sent by mail to Buenos Ayres, franked with 150 réis, blue, and two stamps 300 réis, lilac, all in unsurfaced paper, perforated $12 \frac{3}{4}$, obliterated with oval bar postmark "1" Lisbon and dated circular from origin 25/12/1876. On the back circular postmark dated arrival in Buenos Ayres 18/01/1877.

PORTUGAL

Mail to foreign destinations with stamps of the "King Luís I - straight label" issue.

2nd Period (after 1875) - Letter to Brasil, 300 réis for 20 g, (2nd rate) by British packets, from 01/09/1871 to 30/06/1877.



From Oporto to Pernambuco, franked with two stamps of 150 réis, blue, unsurfaced paper, obliterated with oval bar postmark "46" Oporto and dated circular from origin 12/06/1877. On the back dated circular from Lisbon 13/06/1877 and dated circular arrived in Pernambuco.

The recipient paid 600 réis upon receiving the letter

2nd Period (after 1875)

Letter to Argentina, 150 réis for 45 g, (third rate) by non subsidised packets, from 01/07/1877.



From Bilbao to Lisbon carried by hand and in Lisbon sent by mail to Buenos Ayres, franked in Lisbon with a pair and one stamp 50 réis, green, unsurfaced paper, perforated 13 1/2, die I, obliterated with oval bar postmark "1" Lisbon and dated circular from origin 27/10/1877. On the back arrived dated postmark 28/11/1877.

PORTUGAL

Mail to foreign destinations with stamps of the "King Luís I - straight label" issue.

2nd Period (after 1875)

Letter to Brasil, 200 réis (100 réis for 15 g + 100 réis registration fee) by British packets, from 01/07/1877.



From Lisbon to Tephés, Pernambuco, franked with 50 réis, green, die I and 150 réis, blue, die II, both in unsurfaced paper, perforated $12 \frac{3}{4}$, die I, obliterated with oval bar postmark "1" Lisbon, oval postmark dated register 27/12/1877. On the back oval arrived in Pernambuco 10/01/1878.

2nd Period (after 1875) - postal stationery to Swiss, 20 réis, from 01/01/1876.



Postal stationery from Vila Nova de Gaya to Bern, franked with a extra 10 réis, green, unsurfaced paper, perforated $12 \frac{3}{4}$, die I, obliterated with dated circular from origin 29/03/1881, circular transit postmark "IRUN A BORDEAUX" and circular arrived in Bern 31/04/1881.

PORTUGAL

Mail to foreign destinations with stamps of the "King Luís I - straight label" issue.

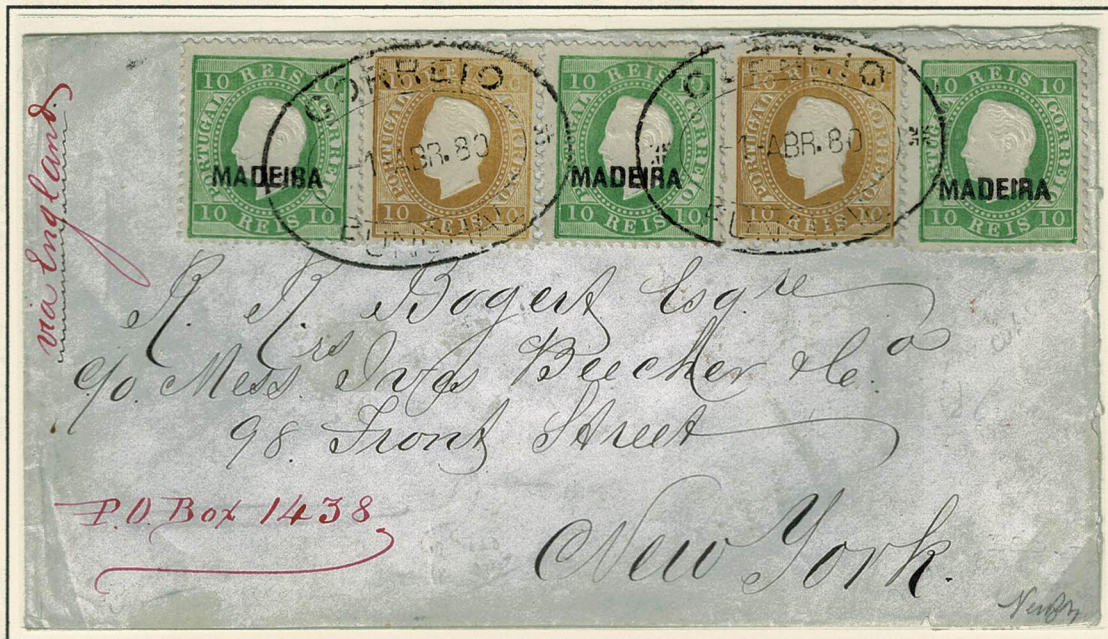
2nd Period (after 1875)

Letter to France, 250 réis (200 réis for 4th rate - 60 g + 50 réis registration fee) from 01/01/1876.



From Lisbon to Paris, franked with 100 réis, lilac, die I and 150 réis, yellow, die II both in unsurfaced paper, perforated 12 ³/₄, obliterated with dated circular from Lisbon 28/04/1885. On the back arrived postmark.

2nd Period (after 1875) - Letter to USA, 50 réis for 15 g, from 01/07/1875.



From Funchal to New York, franked with three stamps 10 réis, green, overprinted "MADEIRA" and two stamps, 10 réis, yellow, unsurfaced paper, perforated 12 ³/₄, die I, obliterated by two dated oval "CORREIO FUNCHAL". On the back arrived postmark 01/04/1880.

PORTUGAL

Mail to foreign destinations with stamps of the "King Luís I - straight label" issue.

2nd Period (after 1875)

Letter to USA, 200 réis (150 réis - 3rd rate for 45 g + 50 réis, registration fee) from 01/07/1875.



From Lisbon to Fargo, franked with 50 réis, blue, and 150 réis, yellow, chalky paper, perforated 13 ³/₄, die II, obliterated with dated circular from origin 20/03/1887. On the back arrived dated oval from New York 06/04/1887.

2nd Period (after 1875)

- Letter to China, 290 réis (240 réis 3rd rate for 45 g + 50 réis for registration fee).



From Lisbon to Shangae, franked with 50 réis, blue and three stamps, 80 réis, orange, all in chalky paper, perforated 12 ³/₄, die I, obliterated with dated circular postmark 13/02/1889. Arrived dated circular 23/03/1889, In the front registered label.

PORTUGAL

Mail to foreign destinations with stamps of the "King Luís I - straight label" issue.



Registered letter sent from Lisbon to "Narbonne", France, franked with a stamp of 100 réis, lilac, chalky paper, perforated 12 3/4, die I and two strips of five stamps each, 20 réis, carmine, chalky paper, perforated 11 3/4, from the issue "1884/7—D. Luís de Frente", obliterated by dated, circular, from origine "Calhariz", Lisbon, 05/07/1889, dated circular from "Bordeaux" 07/07/1889 and dated railway postmark 07/07/1889 and "Narbonne".

2nd Period (after 1875)
 Letter to France, fifth rate 5 x 50 réis for 75 g and 50 réis registered fee. Since 01/01/1876.

Registered letter sent from Lisbon to "Narbonne", franked with 80 réis, orange, chalky paper, perforated 12 3/4, die I and two stamps, 50 réis, blue, two stamps, 10 réis, green, from the issue "1882/3 and 1884/7 - D. Luís I de frente", obliterated with dated circular, postmark from "Calhariz", Lisbon 09/11/1890 and dated circular from "Bordeaux" 11/11/1890.

2nd Period (after 1875)
 Letter to France, third rate 3 x 50 réis for 45 g and 50 réis registered fee. Since 01/01/1876.

